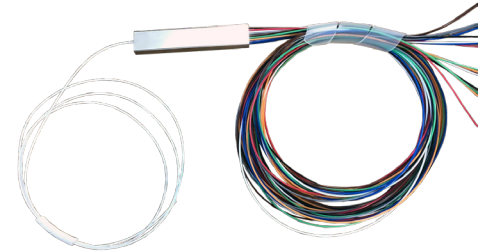


PLC Splitter Mini Module Package

LBPM MINI SERIES

LINDSAY
BROADBAND

Lindsay's Planar Lightwave Circuit (PLC) splitters are an optical power management device that are fabricated using silica optical waveguide technology. The LBPM mini series of devices feature a compact size, high reliability, a wide operating wavelength range, and good channel-to-channel uniformity. These devices are widely used in PON and FTTX network applications. Lindsay offers a whole series of 1xN splitter products that are tailored for specific applications.

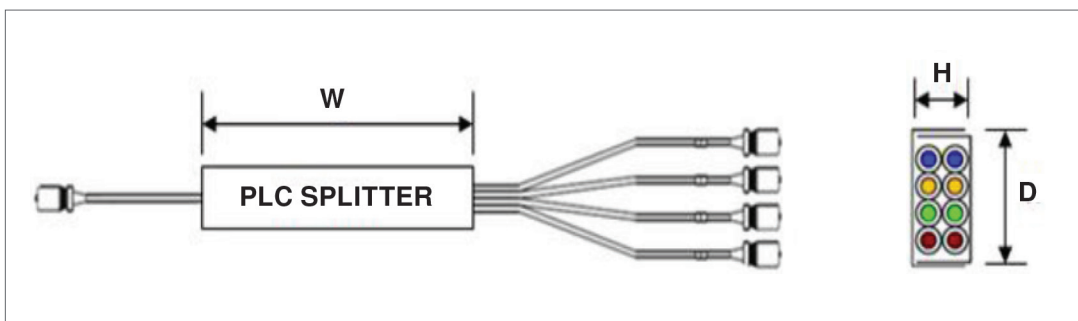


LBPM PLC Splitter Mini Module Package

FEATURES

- Compact design
- Low insertion loss
- Low Polarization Dependent Loss (PDL)
- Good channel-to-channel uniformity
- Wide operating wavelength
- High reliability & stability
- Telcordia GR-1209-CORE & GR-12221-CORE compliant
- RoHS compliant
- 100% performance tested
- Birth certificate supplied

COLOR & SIZE CHART





SPECIFICATIONS

Parameter	Specification					
Operating Wavelength	1260-1650 nm					
Fiber Type	G657A1 or customer specified					
Port Configuration	1x2	1x4	1x8	1x16	1x32	1x64
Insertion Loss (P/S Grade) (Max.)	3.8-4.0 dB	7.1-7.3 dB	10.2-10.5 dB	13.5-13.7 dB	16.5-16.9 dB	20.5-21.0 dB
Loss Uniformity (Max.)	0.5 dB	0.7 dB	0.8 dB	1.2 dB	1.5 dB	2.0 dB
Polarization Dependent Loss (Max.)	0.2 dB	0.2 dB	0.2 dB	0.25 dB	0.25 dB	0.35 dB
Return Loss (Min.)	55.0 dB	55.0 dB	55.0 dB	55.0 dB	55.0 dB	55.0 dB
Directivity (Min.)	55.0 dB	55.0 dB	55.0 dB	55.0 dB	55.0 dB	55.0 dB
Wavelength Dependent Loss (Max.)	0.5 dB	0.5 dB	0.5 dB	0.8 dB	0.8 dB	1.0 dB
Temperature Stability (Max.) -40°C to +85°C -40°F to +185°F	0.5 dB	0.5 dB	0.5 dB	0.5 dB	0.5 dB	0.5 dB
Dimensions (H x W x D)	0.1"H x 2.3"W x 0.3"D (0.4H x 6.0W x 0.7D cm)	0.1"H x 2.3"W x 0.3"D (0.4H x 6.0W x 0.7D cm)	0.1"H x 2.3"W x 0.3"D (0.4H x 6.0W x 0.7D cm)	0.1"H x 2.3"W x 0.5"D (0.4H x 6.0W x 1.2D cm)	0.3"H x 3.1"W x 0.8"D (0.6H x 8.0W x 2.0D cm)	0.2"H x 3.9"W x 1.5"D (0.6H x 10.0W x 4.0D cm)
Weight	0.6 oz (17.0 g)	1.4 oz (39.7 g)	2.1 oz (59.5 g)	3.4 oz (96.4 g)	7.0 oz (198.5 g)	12.8 oz (362.9 g)

ORDERING INFORMATION

LBPM	Port Configuration	Module Type	Cable Type	Fiber Length	Input Connector Type	Output Connector Type
-	xxx	MM	xx	xx	x	x
	102 = 1x2	MM = Mini module	09 = 0.9 mm	10 = 1.0 m	0 = No connector	0 = No connector
	104 = 1x4		20 = 2.0 mm	15 = 1.5 m	1 = FC/UPC	1 = FC/UPC
	108 = 1x8		30 = 3.0 mm	20 = 2.0 m	2 = FC/APC	2 = FC/APC
	116 = 1x16				3 = SC/UPC	3 = SC/UPC
	132 = 1x32				4 = SC/APC	4 = SC/APC
	164 = 1x64				5 = LC/UPC	5 = LC/UPC
					6 = LC/APC	6 = LC/APC
				X = Customized	X = Customized	