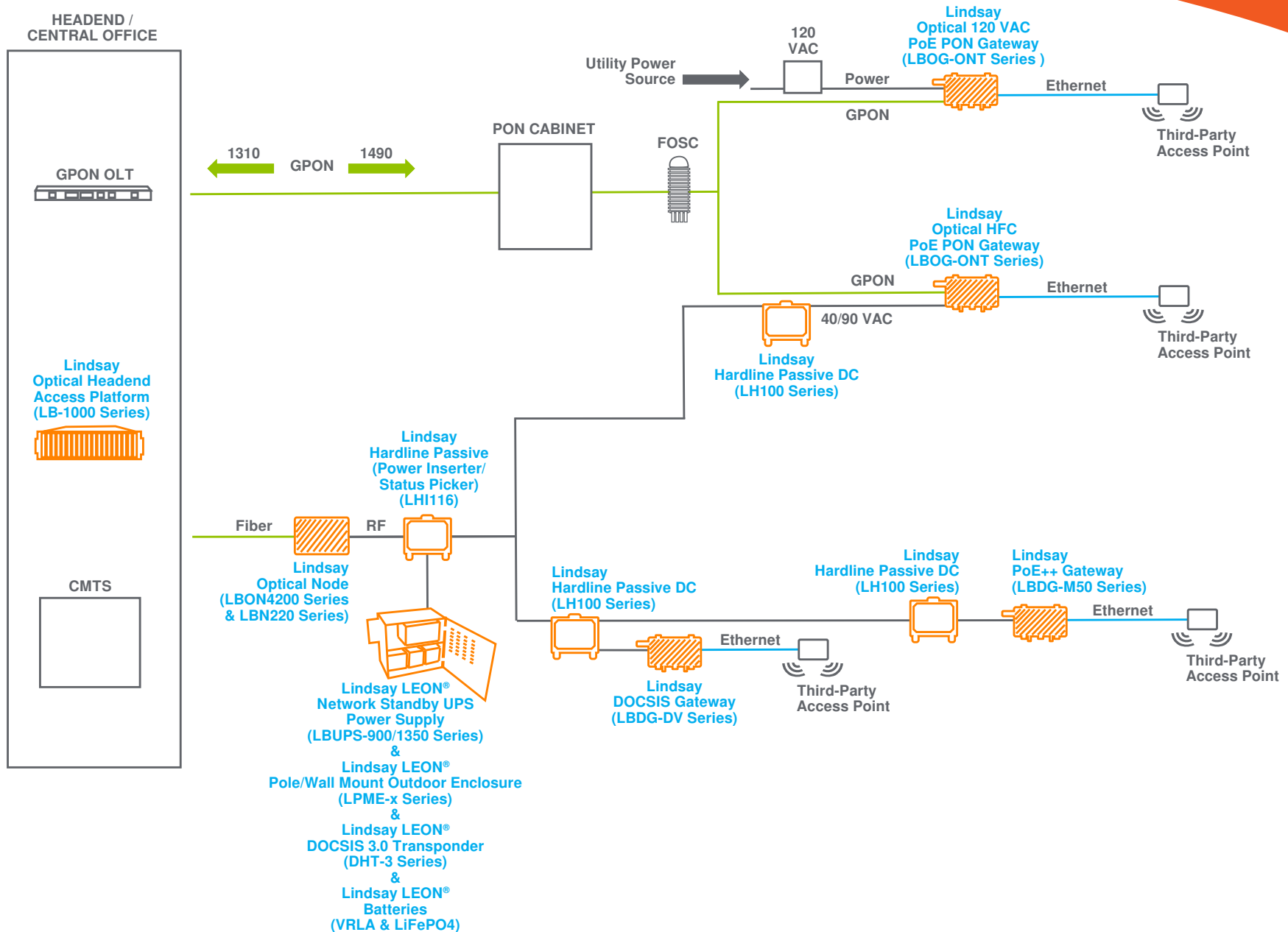


PON GATEWAY SOLUTIONS



* Orange outlined images indicate Lindsay Broadband offering

Lindsay's PON gateway solutions offer a cost-effective means of providing power and backhaul to a broad range of IP devices. Lindsay has engineered flexible access to network power via 100-240 VAC or 40-90 VAC HFC via our 100 series of hardline passives. Current versions provide a passive PoE 48 VDC 802.3af output. Lindsay's solutions are hardened to extreme conditions which ensures a high quality, reliable connection that supports Wi-Fi®, IoT, security, digital signage, and street furniture deployments.

OPTICAL HFC PoE PON GATEWAYS LBOG-ONT SERIES

FEATURES

- Diecast aluminum housing (clamshell design)
- Mounting Configurations: Strand, vault, pedestal or wall
- 15 PSI weatherproof seal
- Operating Temperature Range: -40°C to +60°C (-40°F to 140°F)
- 6 kV surge protection
- Fully ITU-T G.984 compliant framing
- 2 Power Options: HFC (40-90 VAC) or mains (100-240 VAC)
- HFC access at any directional coupler or power passing tap
- Weather-tight RJ45 Ethernet connector
- 802.3at PoE (provides up to 20 W)
- Monitor & configure via SNMP agent, SSH or web browser
- Add Wi-Fi, camera or other service-enabling device

Full details here: <https://lindsaybb.com/products/business-connectivity/hfc-poe-gateways/optical-hfc-poe-pon-gateways/>

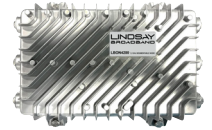


1.2 GHz 2x2 SEGMENTABLE 4-PORT OPTICAL NODE LBON4200 SERIES

FEATURES

- Strand-mounted diecast housing
- Dual gaskets provide 15 PSI weather-tight seal
- Segmentable node with high-level output ports & low distortion
- Can be converted from a 1x4 node into a 2x2 segmentable node or vice versa
- 1.2 GHz 50 dBmV output capabilities
- 1310, 1550 & CWDM return options
- DFB return path optical transmitters
- 40-90 VAC cable plant-powered
- AGC (Automatic Gain Control)
- Diplex filters available in 42/54 & 85/102 MHz
- Onboard equalization adjusted by 1 dB stepped plug-in attenuator
- Operating Temperature: -40°C to +60°C (-40°F to +140°F)

Full details here: <https://lindsaybb.com/products/optical-solutions/optical-nodes/1-2-ghz-nodes/indoor-outdoor-1-2-ghz-2x2-segmentable-4-port-node-lbon4200/>



OPTICAL HEADEND ACCESS PLATFORM LB-1000 SERIES

FEATURES

- High density, 3RU chassis with 18 slots for active application modules
- Plug & play hot-swappable application modules with auto-config feature
- C-Band DWDM wavelengths available upon request (C20 to C59)
- Low power consumption saves OpEx – max 360 W with fully loaded configuration
- Complete range of hot-swappable, robust, optical application modules for HFC, RFOG, & PON/video overlay related applications

Full details here: <https://lindsaybb.com/products/optical-solutions/headend-optics/optical-headend-access-platform-lb-1000-series/>



1.2 GHz OPTICAL NODE FOR HFC & RFOG LBN220 SERIES

FEATURES

- High RF output level 52/48 dBmV for 1-port/2-port
- GaAs FET technology provides low distortions & power consumption
- Downstream bandwidth: 54/85/102 MHz to 1.2 GHz
- Upstream bandwidth: 5 MHz to 42/65/85 MHz
- Extended optical input level range: -8 to 0 dBm
- 1310, 1610 or CWDM; DFB burst return laser options
- Built-in microprocessor controlled AGC tracks input optical level changes
- Optical receiver input & output transmit indicator LEDs & test point
- HFC-powered 40-90 VAC or 100-240 VAC mains-powered

Full details here: <https://lindsaybb.com/products/optical-solutions/optical-nodes/1-2-ghz-nodes/indoor-outdoor-1-2-ghz-node-lbn220/>



1.2 GHz HARDLINE PASSIVE - POWER INSERTER / STATUS PICKER LHI116

FEATURES

- Support DOCSIS® 3.1 bandwidth to 1.2 GHz
- 20 A current capacity
- 6 kV surge protection
- Low insertion loss
- 15 PSI pressure withstand
- Polyurethane coated 360 aluminum alloy housing
- Separate gaskets for weatherproofing & RFI integrity
- Shorting bars to disable power

Full details here: <https://lindsaybb.com/products/rf-solutions/hardline-passives/1-2-ghz-dcs-splitters-power-inserters-lh-100-1-2-series/>



LEON® POLE/WALL MOUNT OUTDOOR ENCLOSURE LPME-x SERIES

FEATURES

- Pole & wall mount installations
- Durable, powder coated aluminum
- Heavy-duty battery slide tray
- Optional external breaker box
- Generator access entry
- Security lock

Full details here: <https://lindsaybb.com/products/powering-solutions-leon/network-standby-ups-power-supplies/pole-wall-mount-outdoor-enclosure-for-power-supplies-lpme/>



LEON® STANDBY POWER SUPPLIES LBUPS 900 & 1350 SERIES

FEATURES

- Industry-proven, backup power solutions for cable systems in outdoor powering applications
- Available in 900 or 1350 W
- Line-interactive ferroresonant technology
- Microprocessor controlled clean & regulated quasi-square wave output
- 3.2" (8.1 cm) color touch screen display provides user-friendly operation
- Intelligent battery management system with temperature compensation
- Excellent input & output short circuit protection
- Easily accessible front panel connections
- Hot-swappable inverter modules
- Field-selectable output voltage
- Optional DOCSIS® / EuroDOCSIS™ embedded status monitoring

Full details here: <https://lindsaybb.com/products/powering-solutions-leon/network-standby-ups-power-supplies/900-1350-w-quasi-square-wave-network-standby-ups-power-supplies-lbups-900-1350-series/>



LEON® DOCSIS 3.0 TRANSPONDER DHT-3 SERIES

FEATURES

- DOCSIS / EuroDOCSIS™ 3.0
- Integrated web server for status monitoring
- Local diagnostics
- Temperature-hardened
- Spectrum analyzer inside
- FCC / IEEE / RoHS compliant

Full details here: <https://lindsaybb.com/products/powering-solutions-leon/network-standby-ups-power-supplies/docsis-transponders-for-monitoring-power-supplies-dht3/>





1.2 & 1.8 GHz HARDLINE PASSIVE - DIRECTIONAL COUPLERS

LH100 1.2 & 1.8 GHz SERIES

FEATURES

- Support DOCSIS® 3.1 & 4.0 bandwidth 5-1800 MHz
- 20/15 A current capacity
- 6 kV surge protection
- Low insertion loss
- 15 PSI pressure withstand
- Polyurethane coated 360 aluminum alloy housing
- Separate gaskets for weatherproofing & RFI integrity
- Shorting bars to disable power

Full details here: <https://lindsaybb.com/products/rf-solutions/hardline-passives/1-2-ghz-dcs-splitters-power-inserters-lh-100-1-2-series/> and <https://lindsaybb.com/products/rf-solutions/hardline-passives/1-8-ghz-dcs-splitters-power-inserters-3-ghz-upgradeable-lh-100-1-8-series/>



DOCSIS STRAND-MOUNTED GATEWAY

LBDG-DV SERIES

FEATURES

- Diecast aluminum housing (clamshell design)
- Mounting Configurations: Wall, pole, vault, mast, or strand
- 15 PSI weatherproof seal
- Temperature-cycled from -40°C to +60°C (-40°F to 140°F)
- 6 kV surge protection
- DOCSIS 2.0/3.0
- Cable plant-powered (40-90 VAC)
- HFC access at any directional coupler or power passing tap
- Weather-tight RJ45 Ethernet connector
- Coax power interface protects RF performance of HFC plant
- Passive PoE 0, 12 or 48 VDC selectable, 802.3af compatible
- Monitor & configure via SNMP agent, SSH or web browser
- Add Wi-Fi®, camera or other service-enabling device

Full details here: <https://lindsaybb.com/products/business-connectivity/hfc-poe-gateways/docsis-hfc-poe-gateways/docsis-hfc-poe-gateways-lbdg-dv-series/>



DOCSIS STRAND-MOUNTED POE++ GATEWAY

LBDG-M50 SERIES

FEATURES

- Diecast aluminum housing (clamshell design)
- Mounting Configurations: Wall, pole, vault, mast, or strand
- 15 PSI weatherproof seal
- Temperature-cycled from -40°C to +60°C (-40°F to 140°F)
- 6 kV surge protection
- DOCSIS 2.0/3.0
- Cable plant-powered (40-90 VAC)
- HFC access at any directional coupler or power passing tap
- Weather-tight RJ45 Ethernet connector
- Coax power interface protects RF performance of HFC plant
- 802.3at PoE++ (provides up to 50 W when using 4 pairs)
- Monitor & configure via SNMP agent, SSH or web browser
- Add Wi-Fi, camera or other service-enabling device

Full details here: <https://lindsaybb.com/products/business-connectivity/small-cell-connectivity/poe-docsis-gateways/poe-docsis-gateways-50-w-output-lbdg-m50-series/>

